



COVINGTON 2030

COMPREHENSIVE PLAN

LAND USE ENVIRONMENTAL QUALITY, SUSTAINABILITY, & HAZARD MITIGATION TRANSPORTATION

DANA BROWN &
Associates

NOVEMBER 5, 2019



MARK R. JOHNSON
Mayor

COMPREHENSIVE PLAN 2030





PLANNING ELEMENTS

- Land Use
- Transportation & Infrastructure
- Community Character & Urban Design
- Historic Preservation
- Housing & Neighborhoods
- Economic Development
- Environmental Quality, Sustainability, & Hazard Mitigation
- Parks, Recreation, & Open Space
- Place Making, Art, & Culture
- Healthy Communities
- Key Public Investments, Community Facilities, & Capital Improvements

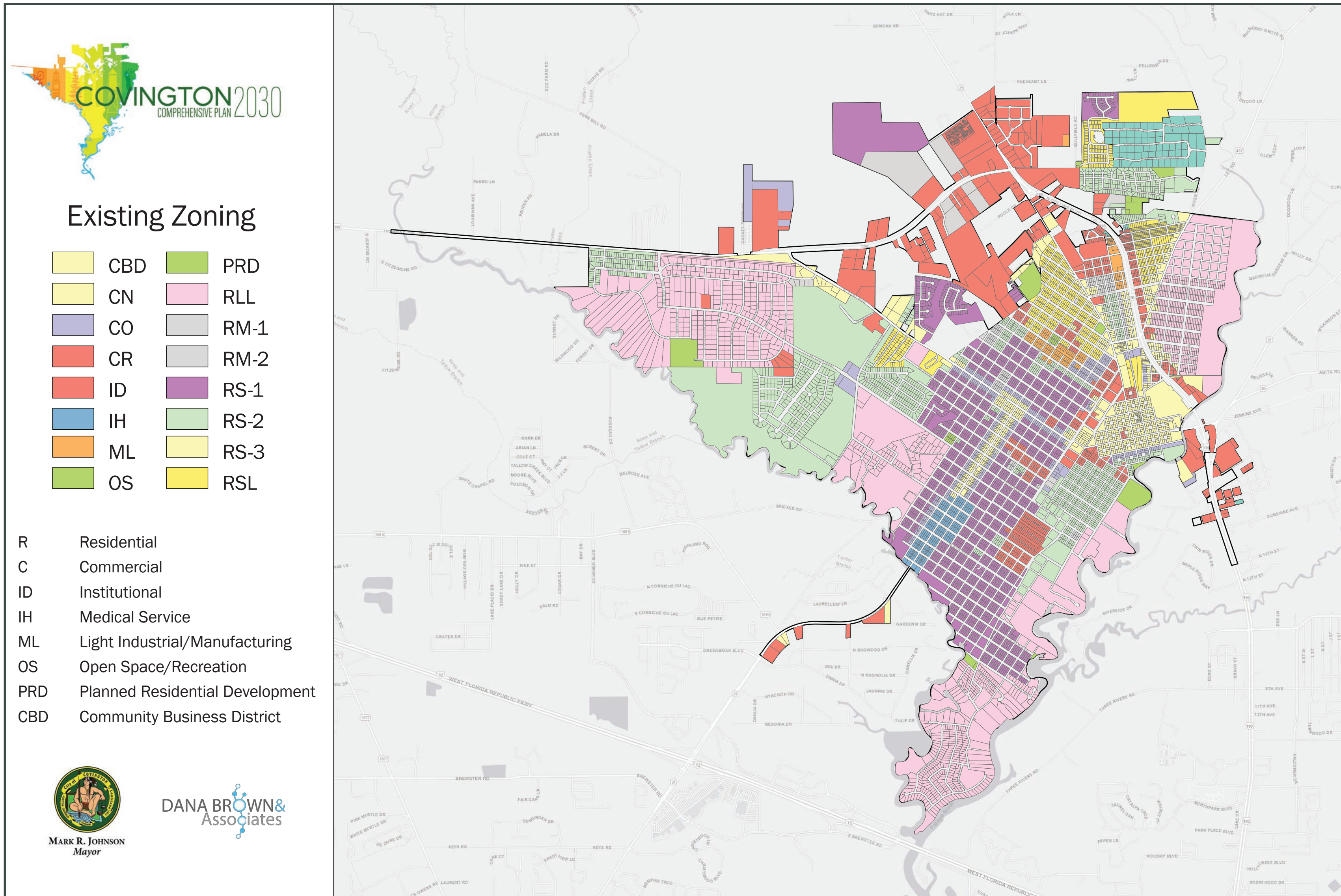
LAND USE

LAND USE Existing Land Use

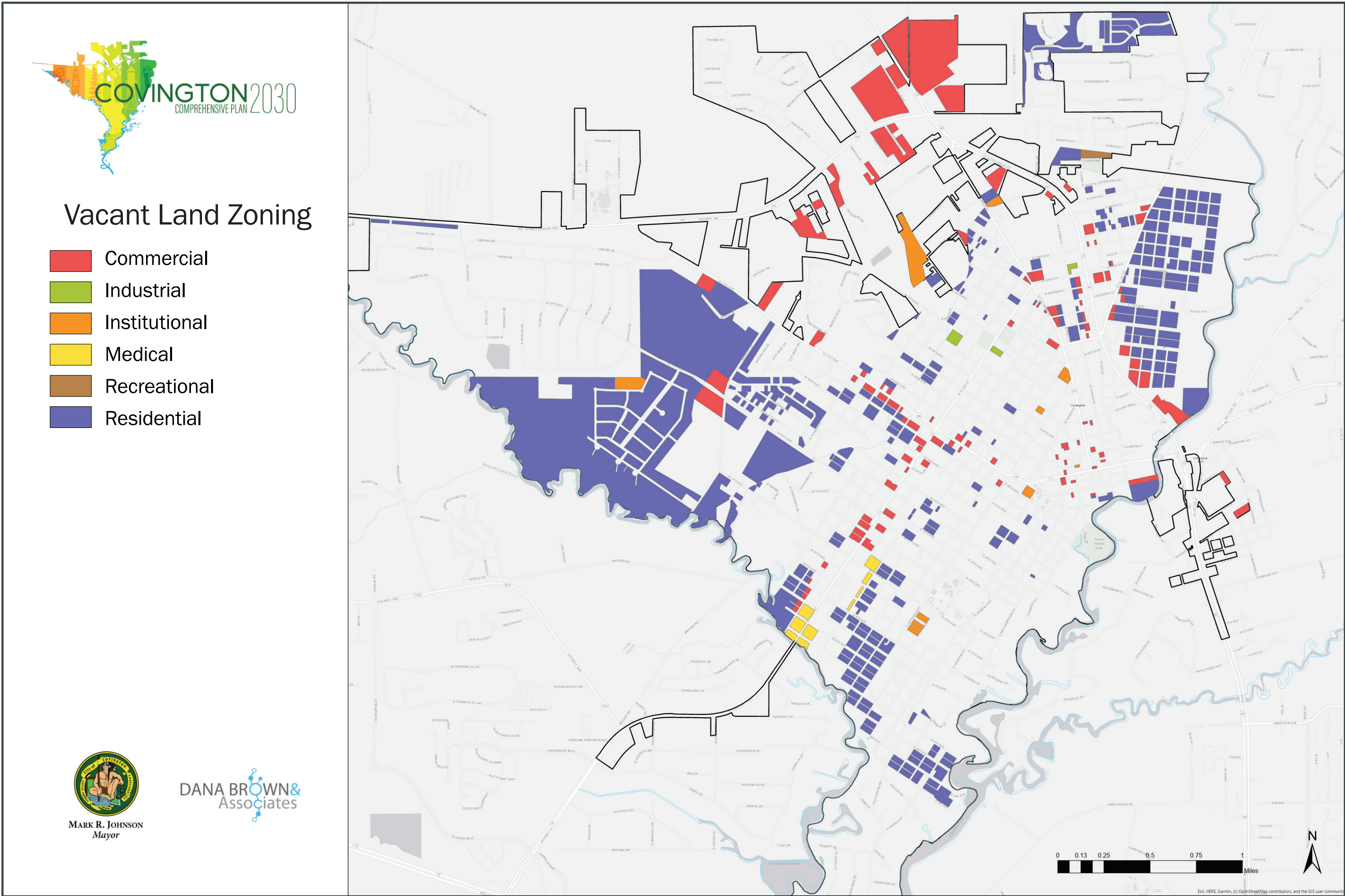
Zoning Codes	Land Use	Area (Acres)	% of Category	% of City Total
Residential				
RSL/RS-1/RS-2/RLL	Single Family	2,585	95%	66%
RS-3	Two-Family	29	1%	1%
RM-1	Three/Four-Family	11	0%	0%
RM-2	Multi-Family	81	3%	2%
PRD	Planned Residential	7	0%	0%
Commercial				
CO	Commercial, Services, Professional Office	113	15%	3%
CN	Neighborhood Commercial	171	22%	4%
CR	Regional Commercial	395	51%	10%
CBD	Community Buisness District	89	12%	2%
Institutional				
ID	Institutional District	320	89%	8%
IH	Medical Service District	41	11%	1%
Industrial				
ML	Light Industrial/Manufacturing	29	100%	1%
Open Space/Recreation				
OS	Open Space/Recreation	55	100%	1%
Total Area		3,944	-	100%

Source: City of Covington GIS

LAND USE Existing Zoning



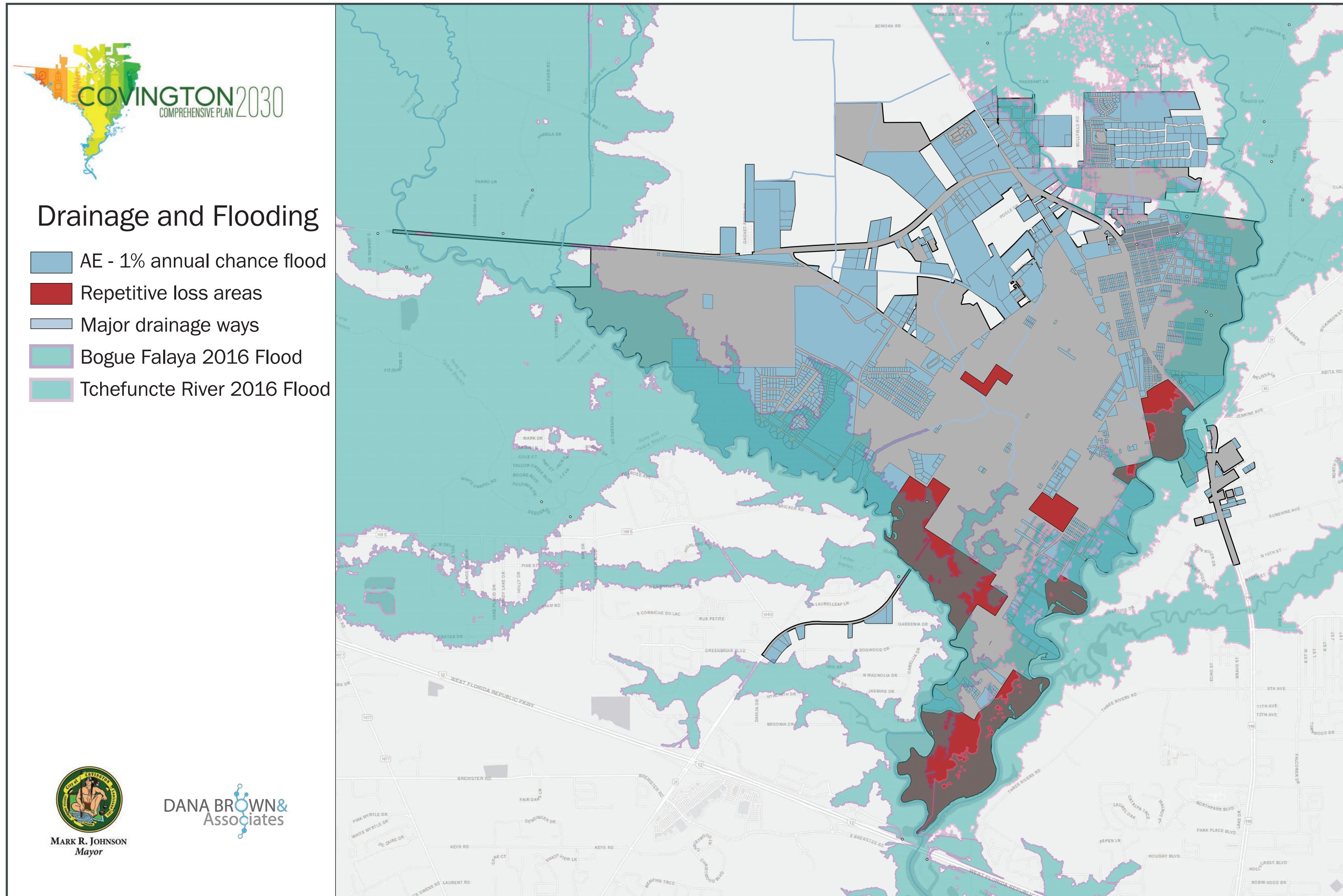
LAND USE Vacant Land





**ENVIRONMENTAL QUALITY
SUSTAINABILITY**

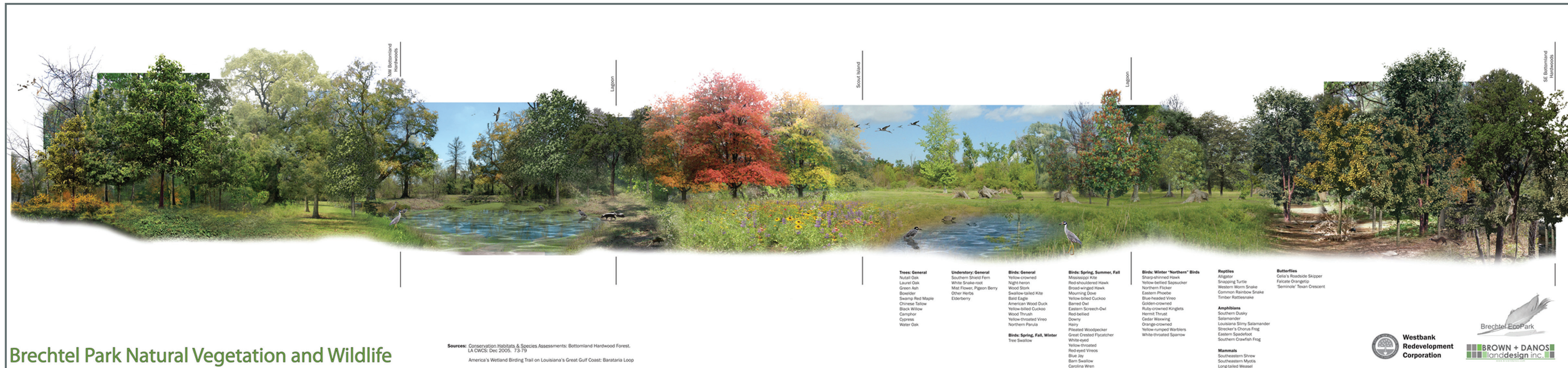
ENVIRONMENTAL QUALITY Drainage and Flooding



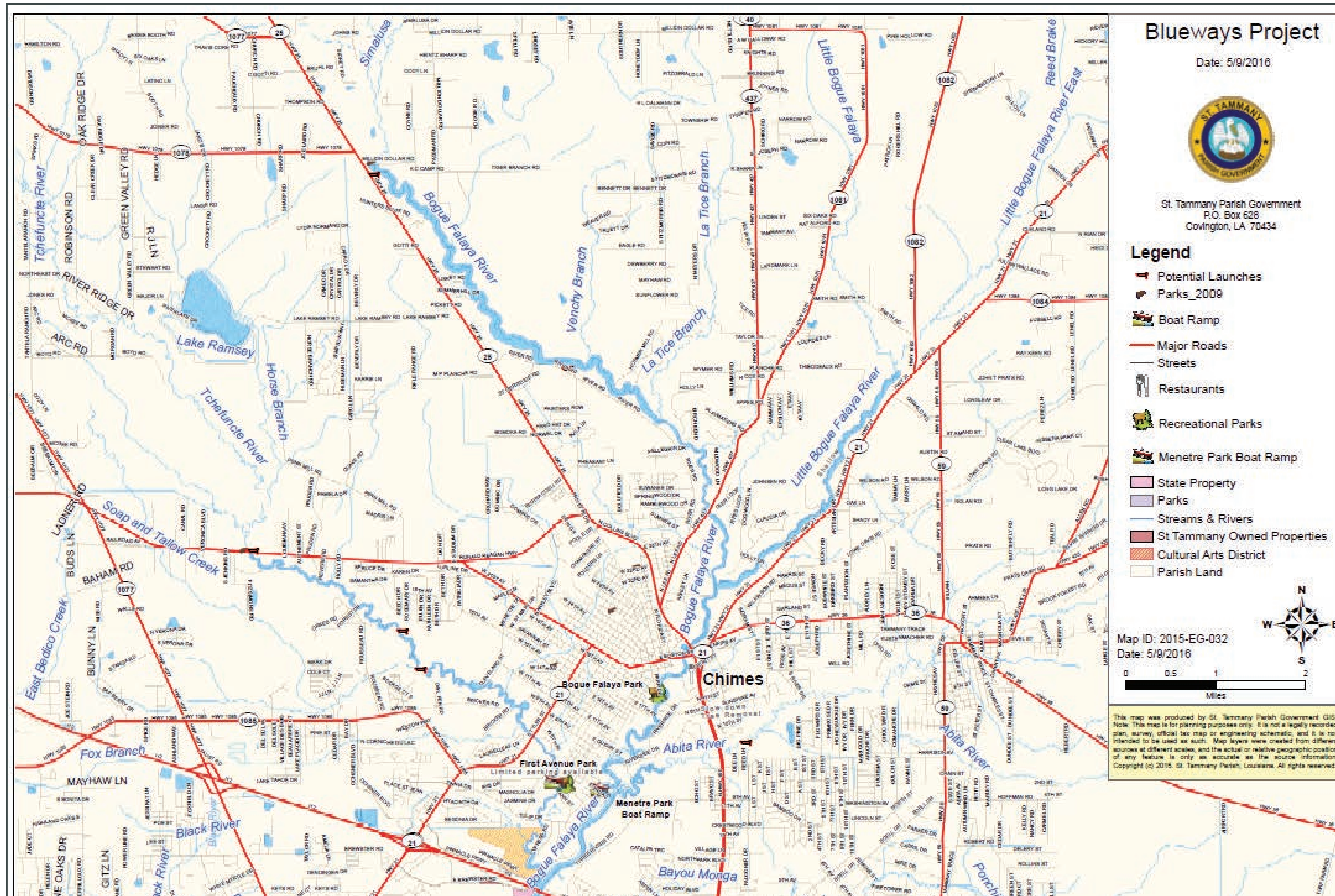
ENVIRONMENTAL QUALITY Considerations

CONSIDERATIONS

- Economic Development
 - Improvement of natural environment
 - Sustainable management of open spaces and landscaping
- Natural Systems
 - Cleaning air and water
 - Stormwater runoff
- Aquatic Areas
 - Protect water quality and habitats
- Climate Change
 - Reduce greenhouse gas emissions
 - Prepare for and adapt to effects
- City Operations & Source Control
 - Environmental performance
 - Waste reduction, pollution prevention, recycling
- Tree Preservation



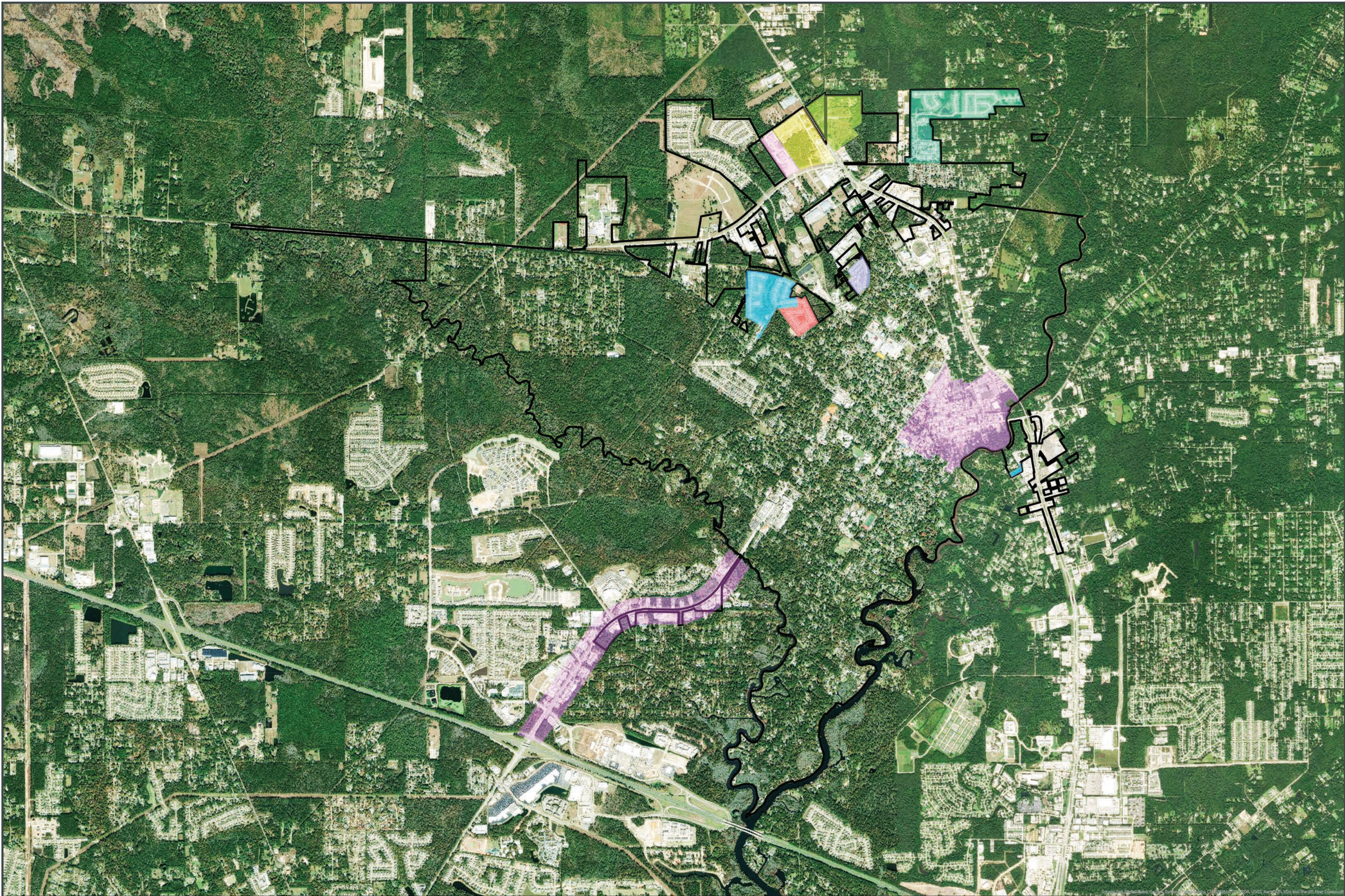
ENVIRONMENTAL QUALITY Blueways Project



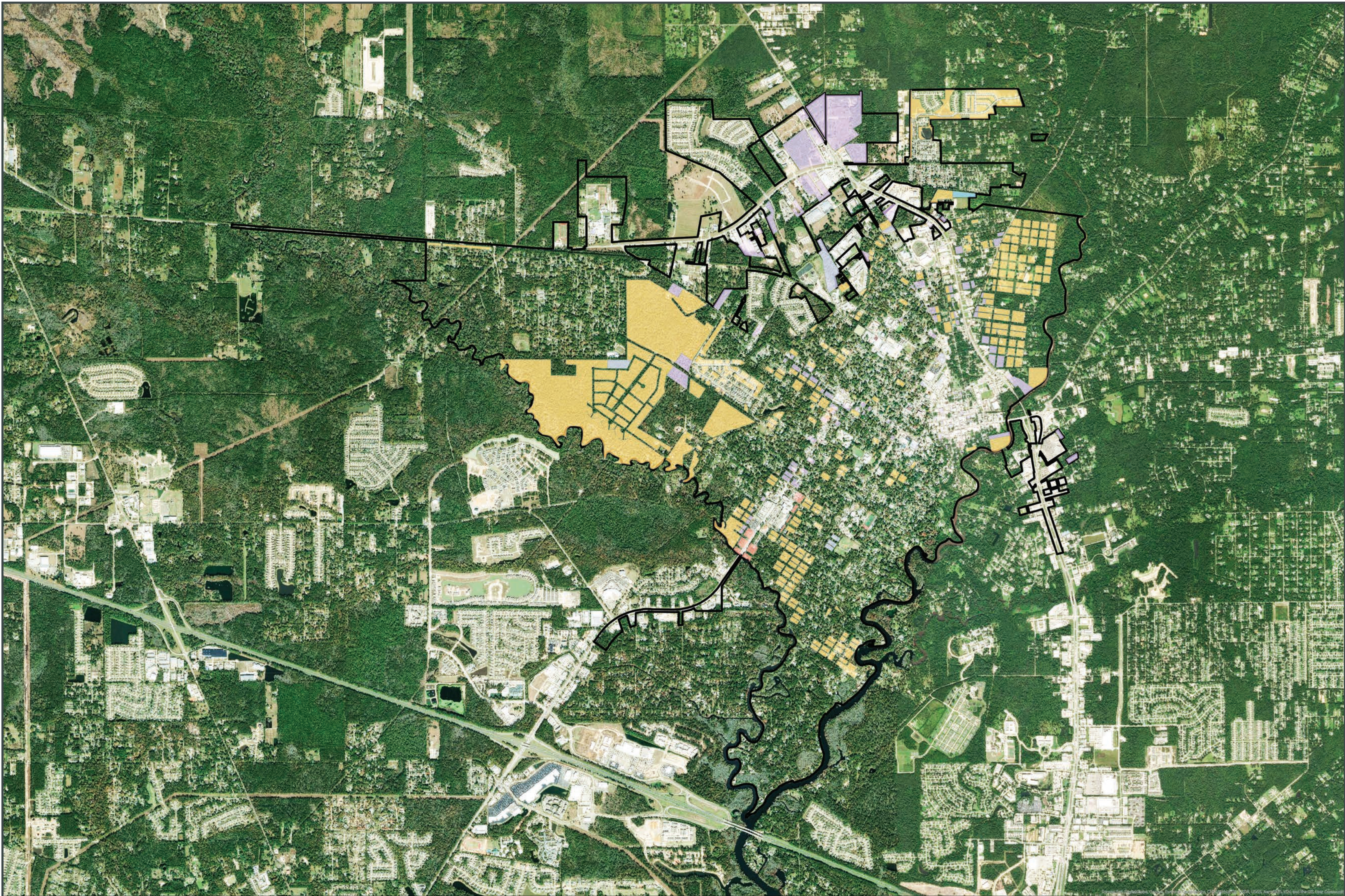
SUSTAINABILITY Tree Cover



SUSTAINABILITY Zoning Overlays



SUSTAINABILITY Vacant Land

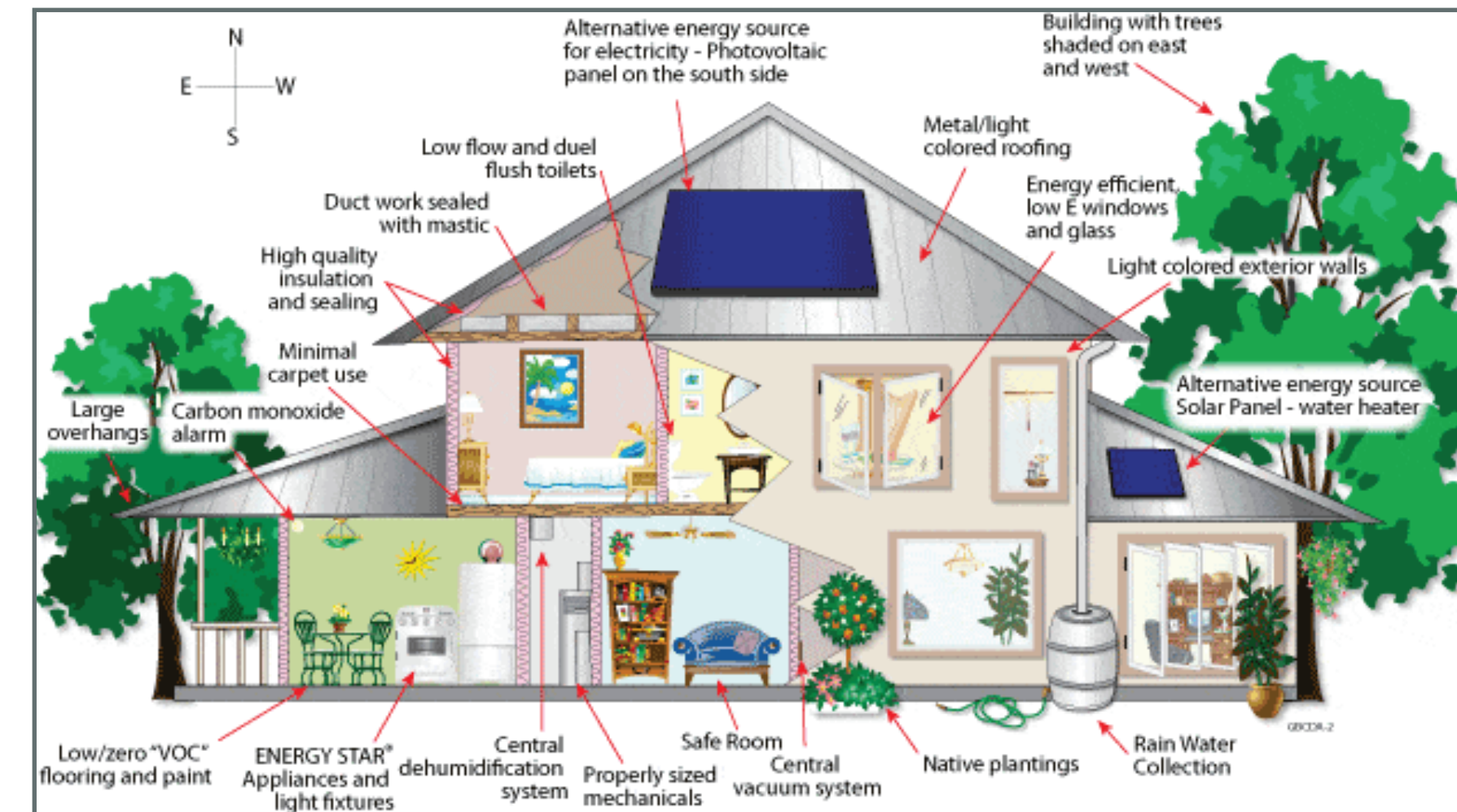


SUSTAINABILITY

CONSIDERATIONS

- Abandoned Properties
- Alternative Vehicle Fueling
- Buy Local Businesses
- Bike Parking
- Child Care Center
- Community Garden
- Diverse Neighborhood
- Dog Park/Run
- Green Building
- Green Power Consumer
- Protected Habitats
- Recycling Center
- Organic School Garden
- Public Works
- Social Service Agency
- Sustainable Garden
- Walking Route
- Wetlands

LEADERS? ORGANIZATIONS?





HAZARD MITIGATION

“...threats or hazards that are classified as probable and those hazards that could cause injury, property damage, business disruption or environmental impact...”

HAZARD MITIGATION Hazard Types

NATURAL

- Coastal Land Loss
- Dam Failure
- Drought
- Earthquake
- Floods & Hurricanes
- Tornadoes
- Wildfires
- Severe Weather (snowstorms, etc.)



MANMADE

- Hazardous Materials Incidents
- Nuclear Power Plants
- Bioterrorism
- Explosions
- Power Outages
- Cybersecurity
- Active Shooter



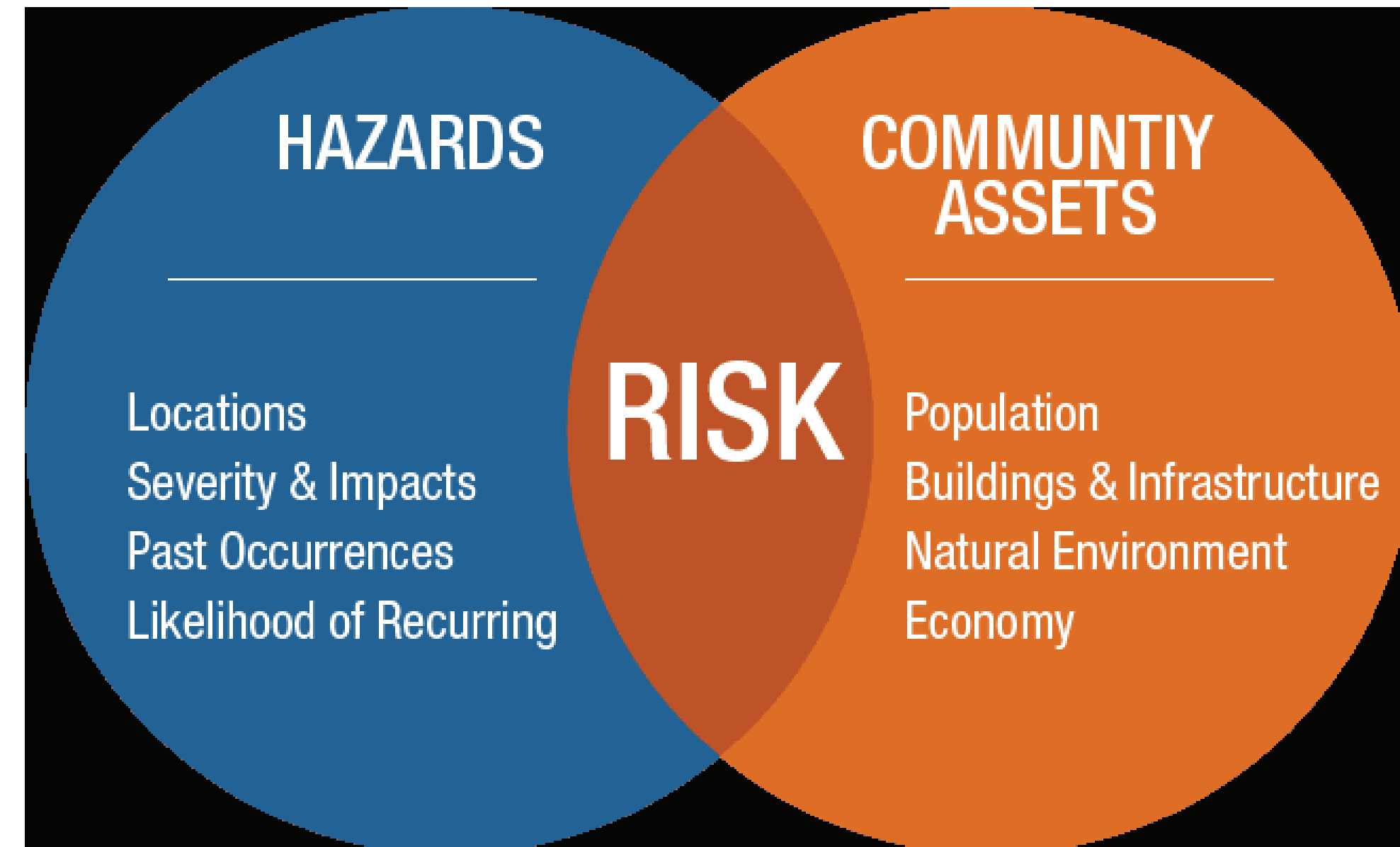
HAZARD MITIGATION Plans & Policies

ST. TAMMANY PARISH

- Emergency Operations Plan (Updated 2019)
- Hazard Mitigation Plan (Updated 2015)
- Planning, Zoning, Permitting
 - Development Regulations
 - Enforcement

RESOURCES

- Ready.gov
- “Alert St. Tammany”
- Dept. of Homeland Security & Emergency Preparedness
 - Dexter Accardo - Director



The background features a complex geometric pattern of overlapping triangles and polygons in various shades of light blue and white. On the left side, there is a white network diagram consisting of several interconnected circles and lines, resembling a molecular or data structure.

TRANSPORTATION

“Transportation planning is the process of defining future policies, goals, investments, and designs to prepare for future needs to move people and goods to destinations.”

TRANSPORTATION

TYPES

“Transportation” can mean a lot of things.

- Vehicular Traffic
- Bicycles
- Pedestrians
- Public Transportation
- Universal Design
- Other



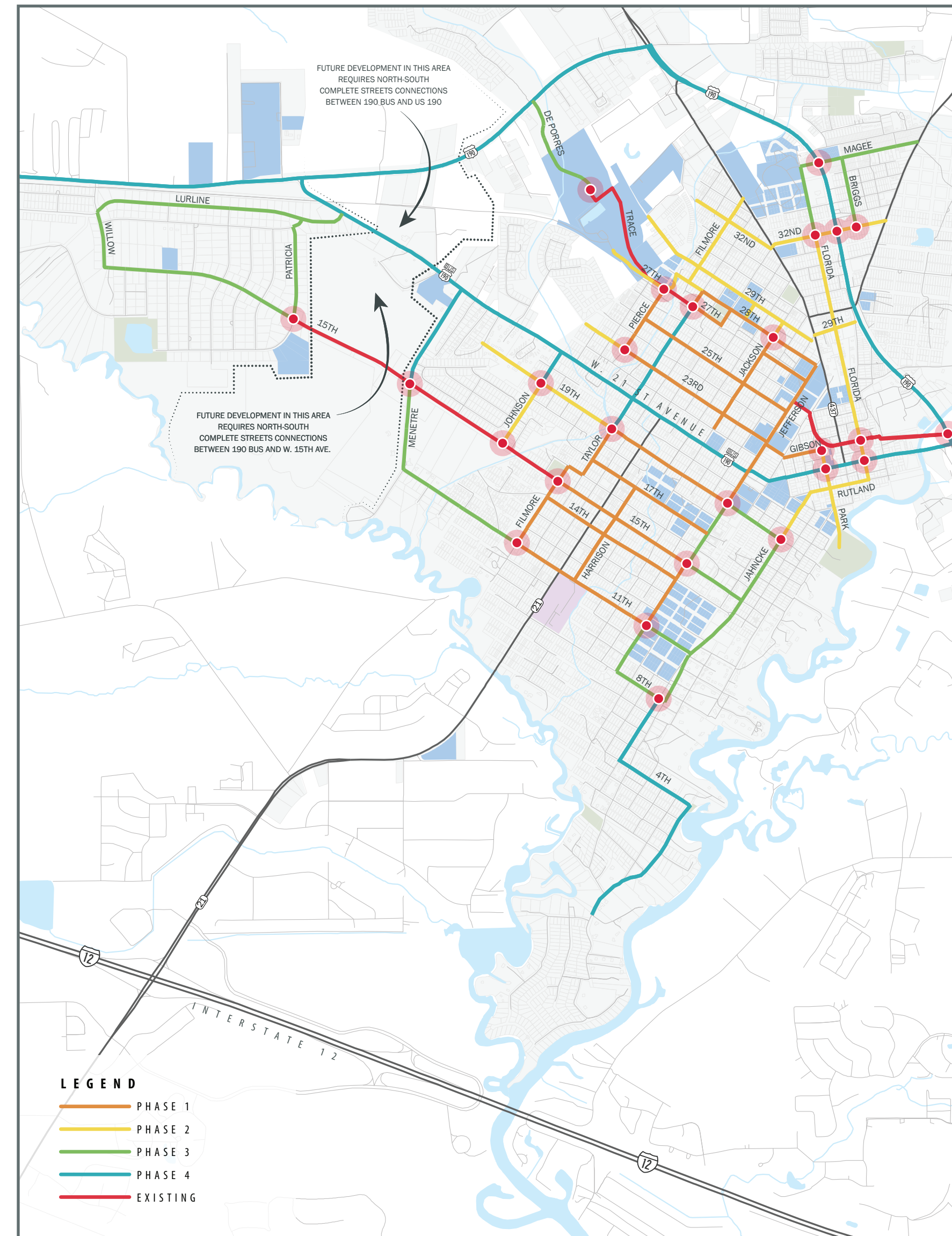
TRANSPORTATION Transportation Planning

BENEFITS

- Safety
- Economic Development
- Recreation
- Schools

PREVIOUS STUDIES & PLANS

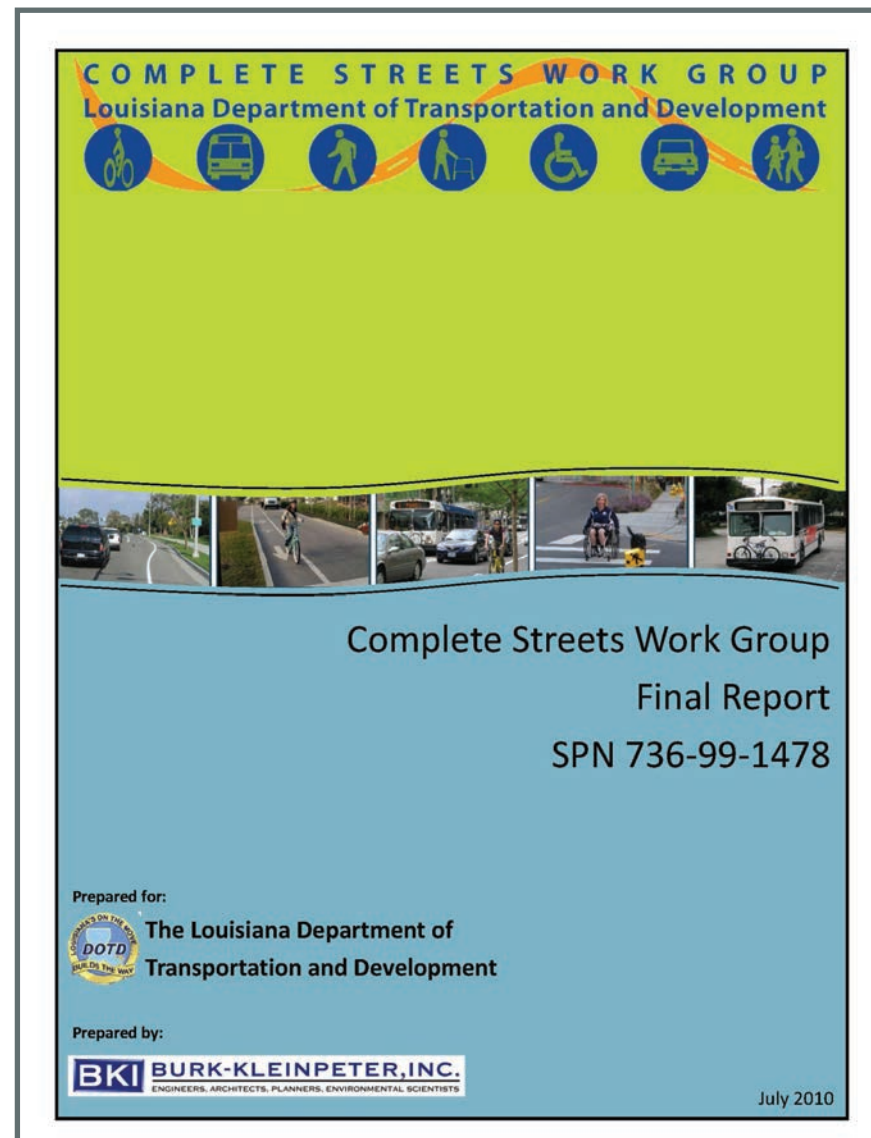
- Congestion Management: Traffic Circulation, Parking, Safety Study (RPC - 2015)
- Covington Traffic Calming & Connectivity Plan (CPEX - 2017)



TRANSPORTATION Complete Streets

Complete Streets are streets for everyone.

They are designed and operated to enable safe access for all users, including pedestrians, bicyclists, motorists and transit riders of all ages and abilities.



QUESTIONS?



PROJECT WEBSITE

www.CovingtonPlan2030.com

PROJECT EMAIL ADDRESS

info@covingtonplan2030.com

INSTAGRAM/FACEBOOK

[@CovingtonPlan2030](#)