



COVINGTON 2030

COMPREHENSIVE PLAN

COVINGTON CITY COUNCIL

DECEMBER 8, 2020

DANA BROWN &
Associates

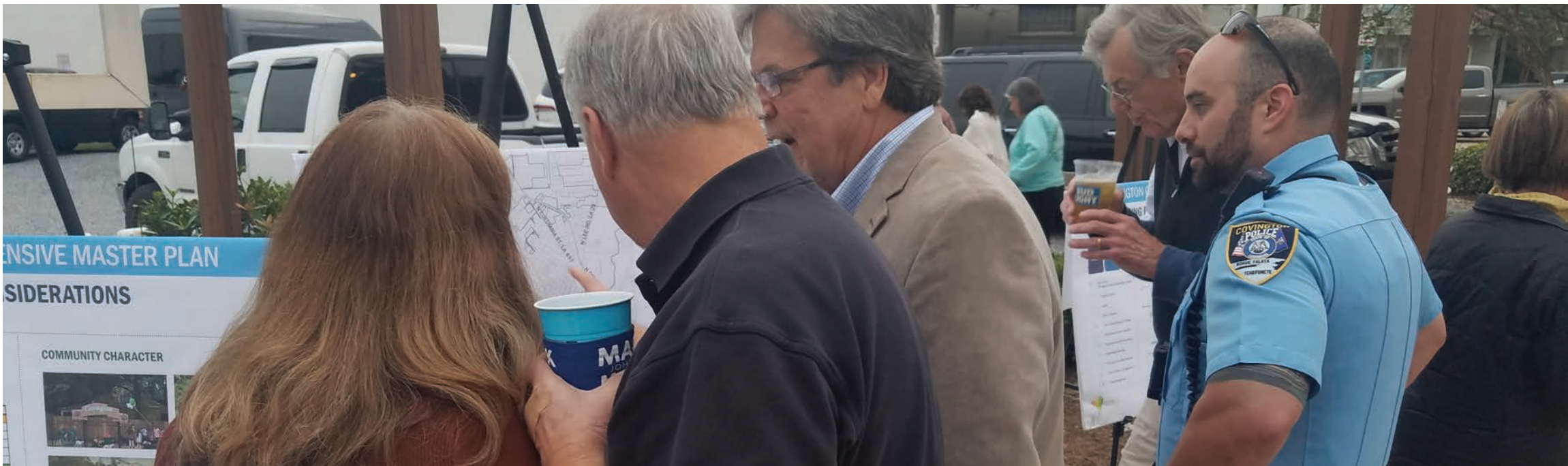


MARK R. JOHNSON
Mayor

PROJECT OVERVIEW



COMPREHENSIVE PLAN 2030



PLANNING TEAM



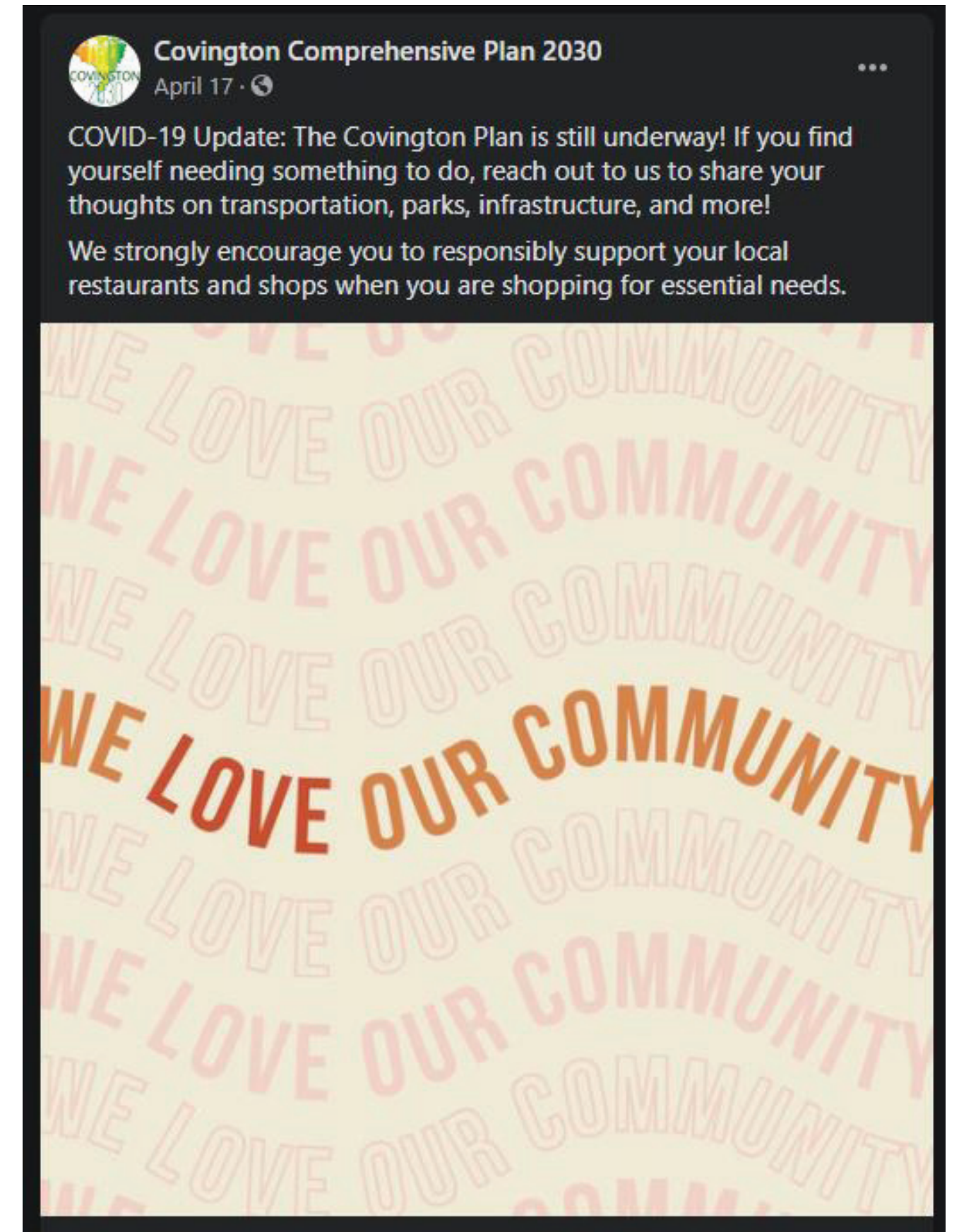
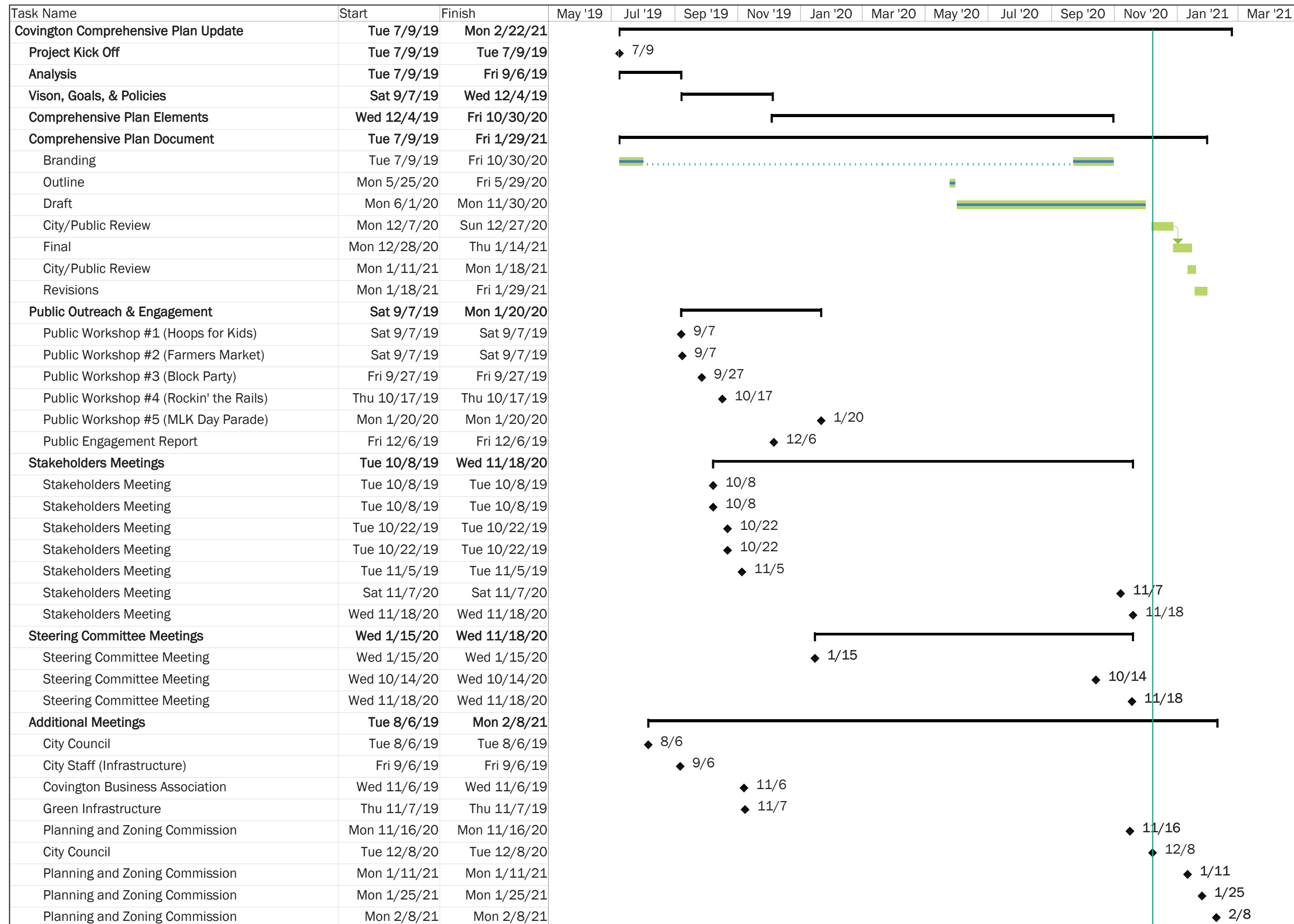
COMPREHENSIVE PLAN 2030

COMPREHENSIVE PLANNING PROCESS



COMPREHENSIVE PLAN 2030

PROJECT SCHEDULE



COMPREHENSIVE PLAN 2030

PUBLIC ENGAGEMENT

- Public Workshops
 - Hoops for Kids on September 7, 2019
 - Covington Farmers Market on September 7, 2019
 - Columbia Street Block Party on September 27, 2019
 - Rockin' the Rails on October 17, 2019
 - MLK Day Ceremony on January 20, 2020
- Organizational and Personnel Meetings
- Resident and Stakeholder Survey
- Public Engagement Report
www.covingtonplan2030.com/engagement-report
- Social Media & Project Website
[@CovingtonPlan2030](https://www.instagram.com/CovingtonPlan2030) www.covingtonplan2030.com

Housing

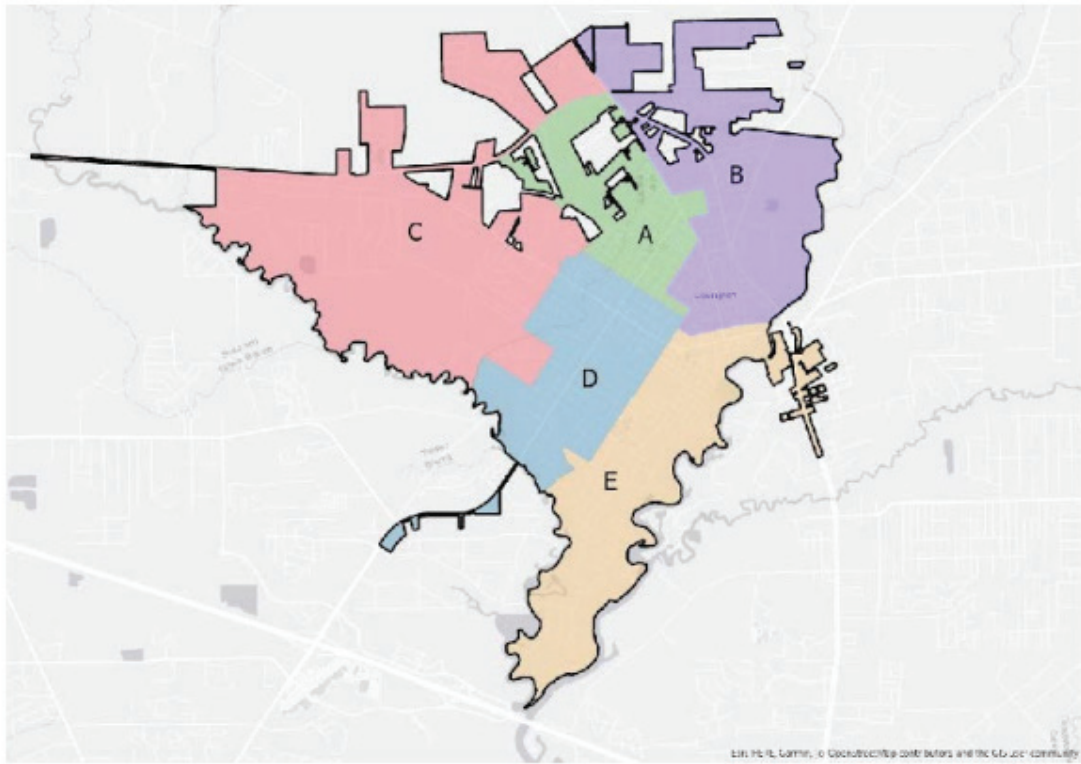
Where do you live? *

City of Covington

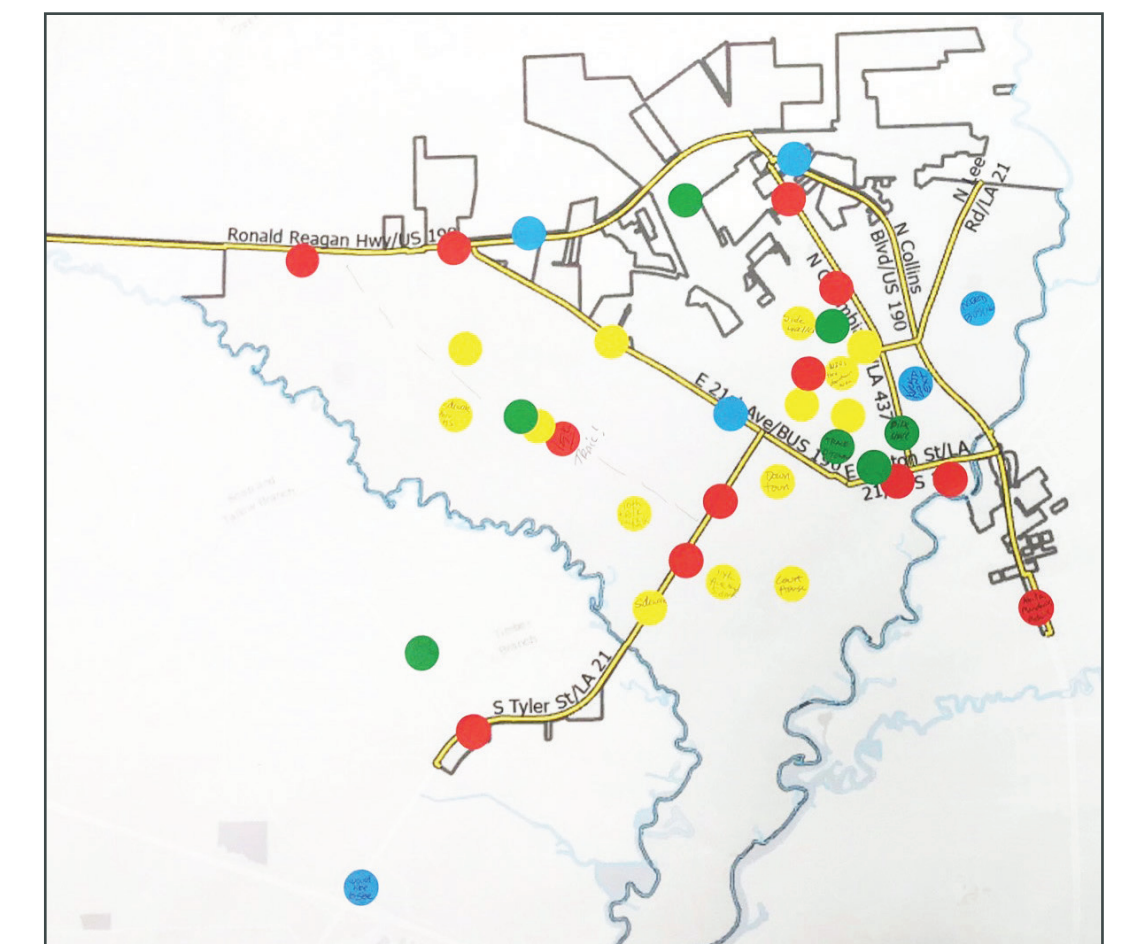
Outside of Covington, in St. Tammany Parish

Outside of St. Tammany Parish

If you live in Covington, which district do you live in? *



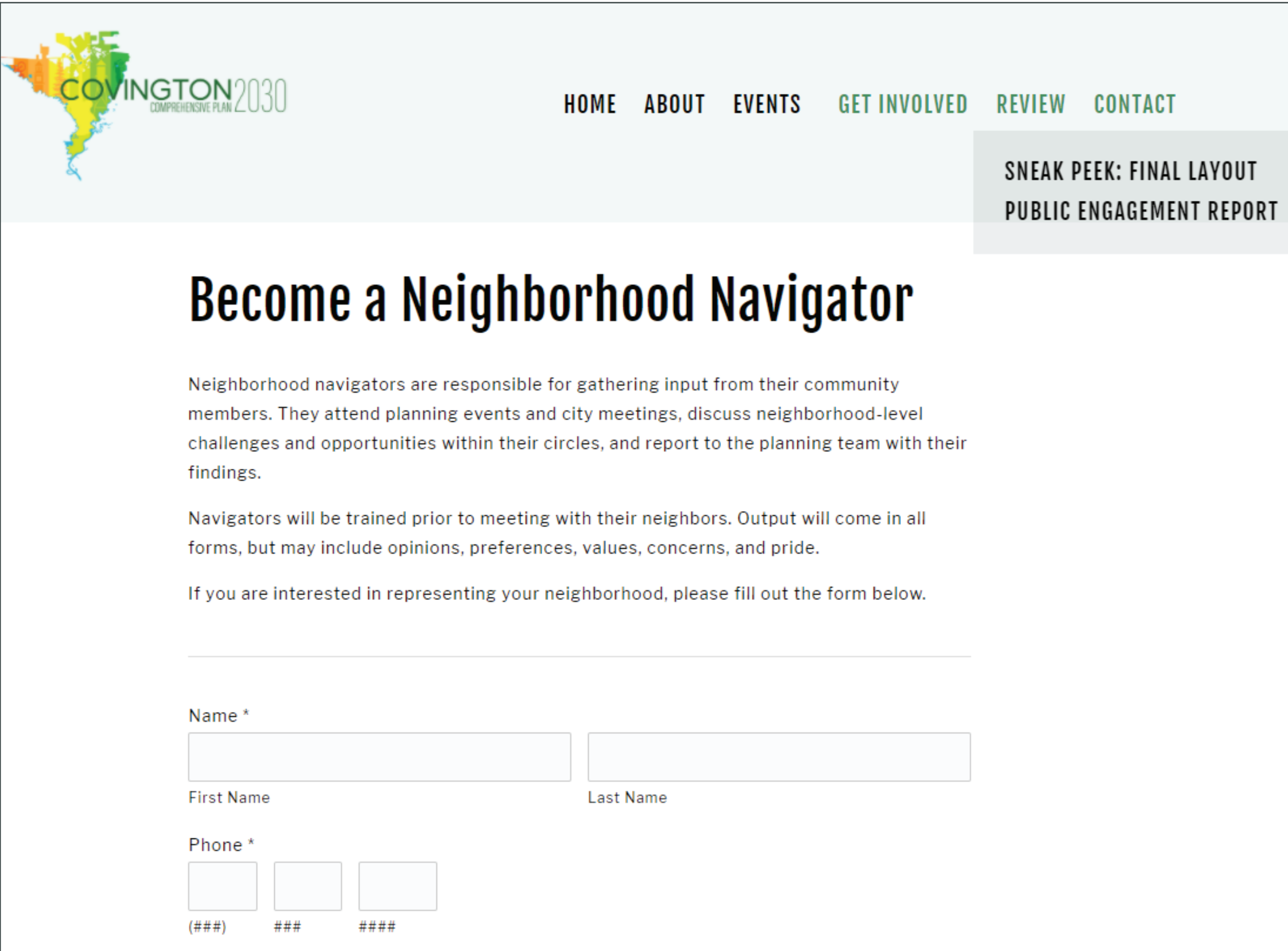
The map shows five districts: A (green), B (purple), C (pink), D (blue), and E (orange). District A is the central area, B is to the north, C is to the west, D is to the south, and E is to the east.



COMPREHENSIVE PLAN 2030

PROJECT WEBSITE

- About
 - Plan 2030
 - Related Plans
- Events
 - Event Schedule
 - Meeting Presentations, Notes, & Recordings
- Review
 - Public Engagement Report
 - Draft Elements
- Ways to Get Involved
 - Neighborhood Navigators
 - Submit Feedback



The screenshot shows the website for the Covington 2030 Comprehensive Plan. The header includes a logo with a map of Covington and the text 'COVINGTON 2030 COMPREHENSIVE PLAN'. Navigation links are 'HOME', 'ABOUT', 'EVENTS', 'GET INVOLVED', 'REVIEW', and 'CONTACT'. A highlighted button reads 'SNEAK PEEK: FINAL LAYOUT PUBLIC ENGAGEMENT REPORT'. The main heading is 'Become a Neighborhood Navigator'. Below this, text explains the role of neighborhood navigators and provides instructions to fill out a form. The form includes fields for 'Name *' (split into 'First Name' and 'Last Name') and 'Phone *' (split into three parts: '(###)', '###', and '####').

COMPREHENSIVE PLAN 2030

NEIGHBORHOOD NAVIGATORS: OVERVIEW

GETTING STARTED

- √ Sign up in-person or on the website
- √ Review training materials sent to you
- √ Confirm your interest in serving

IN ACTION

- √ Talk to your neighbors
(in-person, phone, email, social)
- √ Get to know your neighborhood
- √ Discuss opportunities and needs
- √ Develop ideas for improvements
- √ Share results with the planning team



COMPREHENSIVE PLAN 2030

NEIGHBORHOOD NAVIGATORS: DISCUSSION PROMPTS

- Identify what you already know, learn more
 - How did your neighborhood form?
 - What trends do you notice?
 - Who is your councilmember?
- Making things happen
 - Name three people who would be interested in the plan. Send them the project website or invite them to follow the social media pages.
 - Identify two projects you wish to see implemented - expanded programming, filling in gaps, etc.
 - Contact one person from the next generation. Ask their opinions and consider any differences in perspectives and needs.



PLAN COMPONENTS



COMPREHENSIVE PLAN 2030

PARKS, RECREATION, AND OPEN SPACE

The 2019 National Recreation and Park Association's Agency Performance Review states for cities with populations under 20,000, the median value for area of parkland per 1,000 residents is 11.8. District 10 includes 142 acres of public space for 10,416 residents. This accounts for a level of service of 13.6 acres per 1,000 residents – higher than the national median average. The Covington Department of Parks, Recreation, & Cultural Affairs (DPRC) manages most of the parklands within the city. Table 6.1 includes a complete list of facility names, types, and sizes.

COVINGTON RECREATION COMPLEX

The Covington Recreation Complex (CRC) is a 37-acre active park located off of Highway 190. The CRC includes baseball fields, a practice football field, and fishing pond. CRC facilities are being updated to include an improved children's area and a nature and learning trail. The CRC also serves as the terminus for the Tammany Trace Bike Trail.

BOGUE FALAYA WAYSIDE PARK AND PAVILION

Bogue Falaya Wayside Park and Pavilion is a 13.8 park located along the Bogue Falaya River. The park is mostly passive, although events are hosted there throughout the year. Park amenities include river access, a playground, picnic tables, and a pavilion. The river is considered both an asset and a threat as shoreline erosion and silt deposits are common during intense rain events, such as Hurricane Katrina and the floods of 2016. Moreover, the Louisiana Department of Environmental Quality does not deem the river to be legally swimmable or fishable, limiting river recreation to secondary contact through canoeing and kayaking.

The City holds a master plan for this park that suggests projects for implementation. Recommendations include providing additional amenities and facilities, protecting the shoreline through slope stabilization, and engaging visitors with interpretive signage.

TAMMANY TRACE

The Tammany Trace is a successful rails-to-trails conversion that extends along the Northshore from Covington to Slidell. In 1992 St Tammany Parish acquired 31 miles of the former Illinois Central Railroad and, with funding assistance from grants and the federal government, transformed the abandoned railroad into an asphalted trail accessible to pedestrians, bicyclists, and other non-motorized users. Development of the

Tammany Trace was supported by the Rails to Trails Conservancy, making it the first rails-to-trails project in the state. The Trace is a popular destination for locals and visitors alike, attracting 300,000 users annually. Beyond its use as a recreation facility, its proximity to local retail shops, restaurants, and lodging also contributes revenue to communities along its route.

PROGRAMS

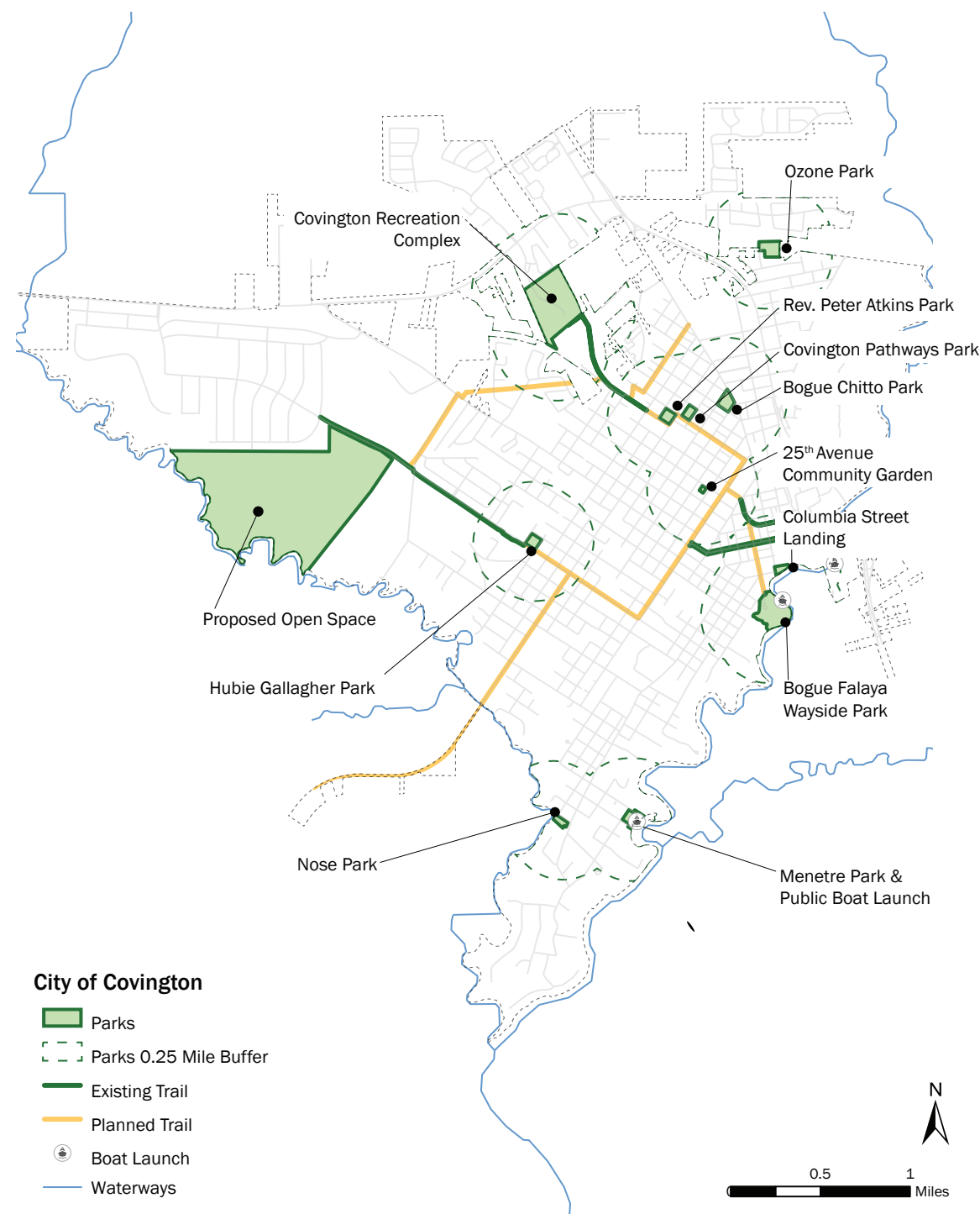
All programs are directed by the City's Recreation Department (CRD) and offered at the Covington Recreation Complex, unless otherwise noted. DPRC prepares an annual programming booklet that is available on the department's website (www.covla.com/recreation). Table 6.2 includes a list of current programs.

Program and event information on the DPRC website is updated regularly, particularly as sports seasons change. The website and social media pages are also accessible ways for residents to stay informed with park improvement projects and volunteer to assist with cleanups and other service opportunities.

TABLE 6.2: COVINGTON PARKS PROGRAMMING

Category	Program
Aquatics	Swim Lessons
Athletics	T-Ball
Athletics	Baseball
Athletics	Softball
Athletics	Fall Ball
Athletics	Tennis
Athletics	Football
Athletics	Cheer
Athletics	Basketball
Fitness	Outdoor Circle Exercise Station
Outdoors	Outdoor Golf Driving Cage
Outdoors	Blue Swamp Creek Nature Trail
Outdoors	Pond at the REC
Outdoors	Tammany Trace - Covington Trailhead

Figure 6.1 Parks, Trails, and Open Space



City of Covington

- Parks
- Parks 0.25 Mile Buffer
- Existing Trail
- Planned Trail
- Boat Launch
- Waterways

PLAN ELEMENTS

- Land Use
- Housing & Neighborhoods
- Economic Development
- Historic Preservation
- Community Character & Urban Design; Placemaking, Art, & Culture
- Transportation & Infrastructure
- Environmental Quality, Sustainability, & Hazard Mitigation
- Parks, Recreation, & Open Space
- Healthy Communities
- Key Public Investments, Community Facilities, & Capital Improvements

Source: Covington Plan 2030 Draft

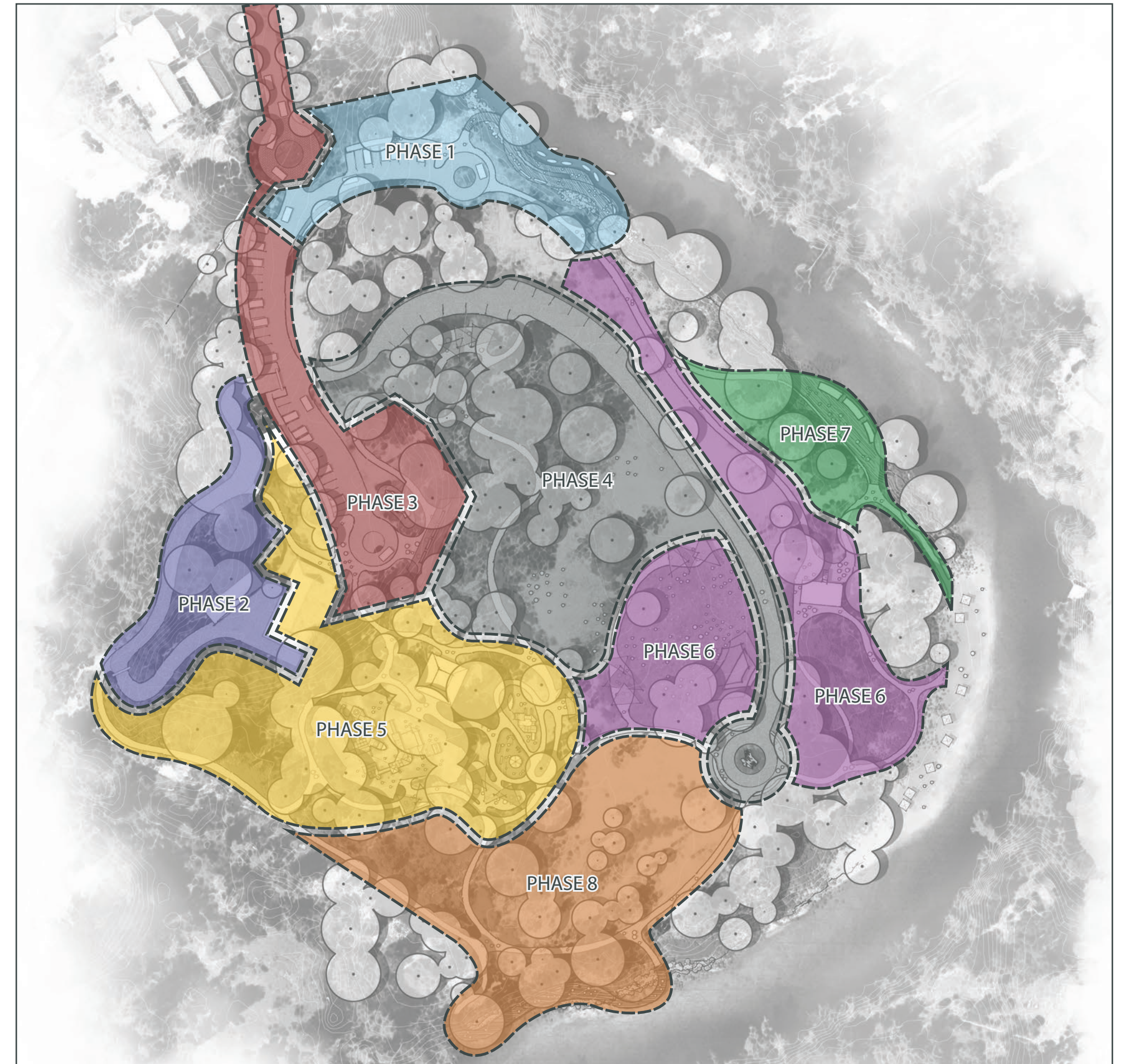
COMPREHENSIVE PLAN 2030

PLAN ELEMENT STRUCTURE

- Introduction to Element
- Existing Conditions
- Current Trends
- Analysis
- Goals & Objectives
- Recommendations

PLAN ELEMENT COMPONENTS

- Text
- Tables, Graphs, & Charts
- Maps, Figures, & Diagrams
- Renderings
- Public Photos

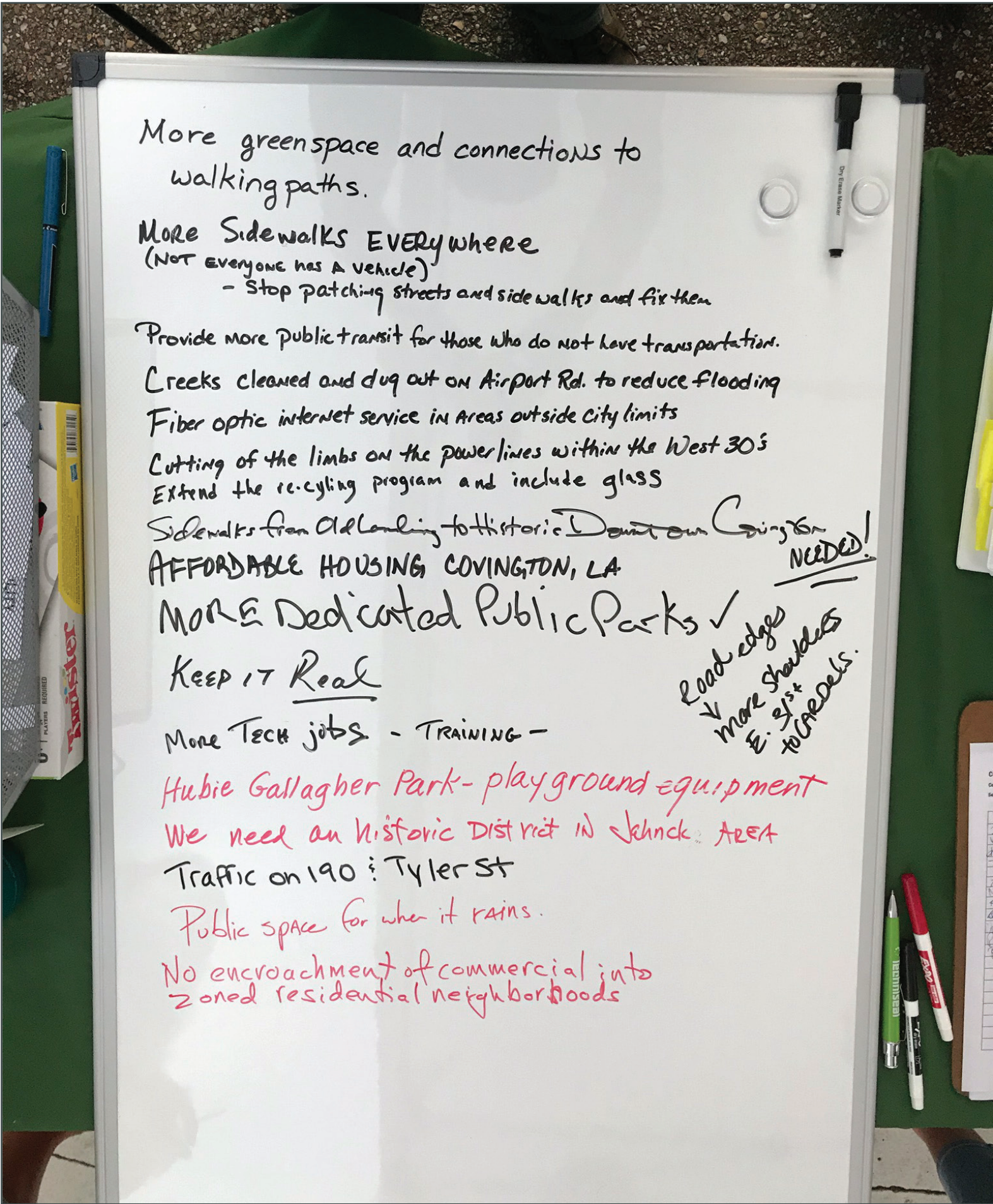


Source: Bogue Falaya Park Master Plan

COMPREHENSIVE PLAN 2030

VISION STATEMENT

In 2030 Covington remains a charming city with a proud history. Those who live in Covington stay for the *sense of community* and *accessibility to regional amenities*. Covington is a *healthy environment* with beloved parks, waterways, and walkable and bikeable routes for commuting and recreational use. It is *resilient to hazards* and *preserves its historic integrity*. The familiar *arts and music events* remain highly anticipated. The city provides *opportunities* for small businesses and regional services to grow, allowing investment to remain at home and redevelopment to flourish. Housing is available for residents of *all abilities and in all stages of life*. *Infrastructure is ample* to match the growing population and the city's expansion. Covington residents, landowners, and business owners continue to work together to realize and evolve the values and goals of the comprehensive plan to continue the city's legacy.



COMPREHENSIVE PLAN 2030

SUMMARY OF MAJOR GOALS

- Manage growth and guide development towards smart growth principles
- Accommodate housing needs of aging, low-income, and young professional populations
- Highlight community assets
- Expand heritage tourism
- Promote safe and comfortable walking and bicycling transportation and recreational options
- Mitigate climate impact
- Protect the health, safety, and welfare of the public
- Increase local and regional commercial business
- Make improvements to the city's aging infrastructure



COMPREHENSIVE PLAN 2030

DRAFT RECOMMENDATIONS: LAND USE

GOAL: Manage growth and guide development towards Smart Growth Principles

OBJECTIVES

- Maintain Covington's character and small town atmosphere
- Support city growth through infill and redevelopment
- Do not expand beyond capacities of infrastructure
- Preserve public open spaces
- Maximize preservation of open space in developments
- Apply overlay districts where additional protection is needed
- Create pedestrian and bicycle-friendly streets in retail zones

RECOMMENDATIONS

- Annex land areas only when economic benefits versus costs are positive for the City
- Incentivize infill development by expediting permitting and reducing City review fees
- Update Subdivision and Zoning Ordinances
- Adopt cluster and conservation subdivision zoning (which can be developed anywhere compatible with underlying zoning)
- Require retail and multi-family developments buildings front on streets
- For large retail or office developments, large buildings may be set back behind parking if smaller commercial is along street
- Implement Covington Bicycle Plan and Complete Streets Policy (2018)

DRAFT RECOMMENDATIONS: HOUSING & NEIGHBORHOODS

GOAL: Accommodate housing needs of aging, low-income, and young professional populations

OBJECTIVES

- Expand availability of varied housing types with smaller dwelling units, smaller lots
- Allow smaller and denser residential developments to reduce costs
- Encourage neighborhood commercial and mixed use developments

RECOMMENDATIONS

- Provide for cluster and conservation subdivision developments in the City Code
- Provide for small neighborhood commercial business within residential areas
- Provide for mixed housing sizes and types in same development
- Allow accessory dwelling units on larger residential lots
- Allow more development of townhomes, triplexes and fourplexes

DRAFT RECOMMENDATIONS: TRANSPORTATION & INFRASTRUCTURE

GOAL: Make improvements to the city's aging infrastructure

OBJECTIVES

- Update infrastructure regularly
- Eliminate major gaps in pedestrian pathways
- Anticipate evolving technological advances
- Protect environmental quality for nature and residents

RECOMMENDATIONS

- Establish an infrastructure maintenance and repair fund for future needs
- Track the age and life cycle of infrastructure to plan for preventive maintenance
- Design and implement bridges over waterways to span from bank to bank (no culverts)
- Prioritize assessing equity for each infrastructure decision
- Install traffic signals on aesthetic poles and arms, not hanging wires
- Install and maintain street trees

DRAFT RECOMMENDATIONS: COMMUNITY CHARACTER & URBAN DESIGN

GOAL: Highlight community assets

OBJECTIVES

- Identify opportunities for interconnectivity
- Maintain architectural scales and materials
- Maintain and expand the character and urban design of downtown
- Upgrade Bogue Falaya Park
- Enhance Tammany Trace connection to the Trailhead

RECOMMENDATIONS

- Implement Complete Streets Policy (2018)
- Develop a City of Covington Pattern Book to assist in repurposing, repairing, and maintaining properties
- Implement the West 30s Revitalization Plan (2010)
- Enhance gateways to the city
- Develop design standards for major corridors
- Enhance awareness and visibility of Ox Lots
- Implement the Bogue Falaya Master Plan (2016)
- Implement the Congestion Management Plan (2014)

COMPREHENSIVE PLAN 2030

IMPLEMENTATION

PUBLIC IMPROVEMENT PROJECTS & POLICIES

- Specific projects and policies
- Priorities
 - Advances vision, goals & objectives
 - Immediate needs
 - Resiliency
 - Available funding
- Costs
- Potential beneficial and adverse impacts
- Responsible parties
- Collaborating entities
- Funding opportunities
- Quick-start, near-term, and long-term



Source: Gretna Comprehensive Plan

COMPREHENSIVE PLAN 2030

ACTION ITEMS

- Review draft report and provide feedback
- Share the website and social media pages
- Invite involved citizens to become Neighborhood Navigators

UPCOMING MEETINGS

- Planning & Zoning Commission
 - January 11
 - January 25
 - February 8



WEBSITE

www.CovingtonPlan2030.com

EMAIL ADDRESS

info@covingtonplan2030.com

INSTAGRAM/FACEBOOK

@CovingtonPlan2030

THANK YOU!